



# EUROLabWorkstation ELISA

High-throughput ELISA analytics



- Fully automated processing of ELISA test kits: up to 15 ELISA plates per run
- The highest throughput system on the market: > 200 tests per hour
- Flexible loading of samples, reagents and dilution plates
- Automatic identification of patient samples, reagents, dilution and ELISA plates – 100% traceability
- Economical and precise pipetting with 10 washable needles
- Convenient and intuitive operation
- Excellent service – reagents, instruments and software from one manufacturer



## Workflow optimisation

- Open system for the processing of ELISA kits from different manufacturers, even combined in one run
- Spatial separation of liquid handling and ELISA plate processing enables parallel workflows
- Maximum process efficiency through intelligent multi-needle system and correspondingly adjusted labware
- Ready-for-use barcoded reagents



## Precise and efficient pipetting

- 10 coated stainless steel needles and precision pumps for optimum pipetting accuracy
- Optimisation of process efficiency through economic travel ways
- Pipetting without carryover through efficient needle washing
- Secure pipetting procedure owing to level and clot detection
- Multishot function for the dispensing of samples and reagents



## Flexible system configuration

- Loading of patient samples in all conventional primary tubes or in 96-well plates according to ANSI SLAS 1-2004 (R2010)
- 45 tracks for the flexible loading with sample and reagent racks as well as accessories
- Up to 8 heatable incubators
- Up to 4 shakeable, heatable incubators
- 2 ELISA wash units with up to 6 different wash buffers





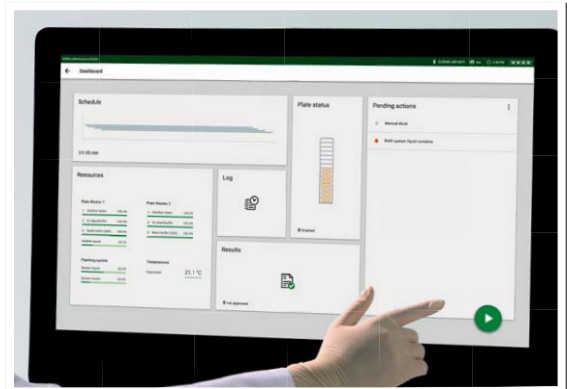
## Convenient operation

- Touch-screen PC with intuitive graphic user interface
- Easy starting of user-specific worklists
- ID-based memory function enables flexible and complete use of dilution plate cavities
- Software-supported maintenance with minimum time expenditure
- Visual examination of incubated ELISA plates without interruption of running processes



## Overview of the process status

- Convenient system overview with detailed status information on run times, resources and ELISA plates
- Clear display of the current run's time flow
- Exact time information for pending actions for improved planning efficiency



## Process safety from A-Z

- Software access with different user accounts and rights
- Transparent traceability of all data entries and changes
- Gapless allocation of test results to the samples and reagents used
- Complete data acquisition by means of integrated barcode scanner for samples, reagents, dilution plates and ELISA plates





## System

Patient sample capacity .....	> 700
Sample material .....	serum, plasma, cerebrospinal fluid and dried blood spot extracts
ELISA plate capacity .....	up to 15 plates
Number tests/microplate .....	up to 12 different
Sample vessels .....	tubes (outer diameter 10–16 mm, height up to 100 mm) or 96-well plates (ANSI SLAS 1-2004 (R2010))
Number of parameters per run ....	up to 180
Throughput .....	> 200 tests per hour
Barcode recognition .....	autom. registration of sample tubes, reagents, dilution plates, ELISA plates; import of QC certificates via 2D manual barcode scanner

## Photometer

Spectral bandwidth .....	400–700 nm
Dynamic bandwidth .....	0.000 to 4.000 OD (measurement range)
Filter wavelength .....	405 nm, 450 nm, 492 nm, 620 nm (4 further filters possible)

## Pipetting unit

Pipettor .....	stainless steel needles, capacitive liquid level detection and clot detection
Pipetting volume .....	5–1100 µL in 1-µL steps
Precision .....	CV < 10% at 10 µl, CV < 1% at 100 µl, CV < 1% at 1000 µL

## Incubation

Capacity .....	15 positions at room temperature (RT)
Incubators .....	up to 8 heatable incubators (RT from +5°C to 80°C) or up to 4 heatable shakeable incubators (RT from +5°C to 80°C, 400–1800 rpm)

## Wash unit

Wash buffer capacity .....	up to 6 different wash buffers
Washer head .....	2x8 dispensing and extraction needles for round- and flat-bottom plates
Remaining volume .....	< 1.8 µl in flat-bottom plates
Liquid level warning .....	continuous control in wash buffer and waste containers

## Features

Operating system .....	Microsoft Windows 10 Enterprise 2019 LTSC (64 bits), PC with touchscreen
Bidirect. communication .....	ASTM
Languages .....	English, German, French
Electrical data .....	100–240 V, 50/60 Hz, 800 VA
Measures/weight .....	approx. 3253 mm x 812 mm x 861 mm (WxDxH)/approx. 450 kg