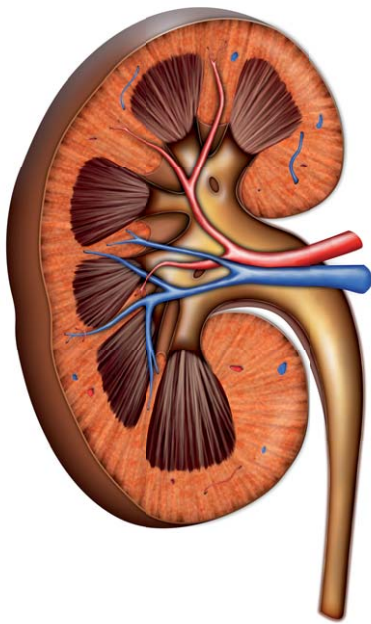




Antikörpernachweis bei autoimmunen Nephropathien



Primäre Membranöse Nephropathie

Anti-PLA2R
Anti-THSD7A
Anti-NELL1*

Goodpasture-Syndrom

Anti-GBM

Lupus-Nephritis

ANA
(Anti-dsDNS,
Anti-Nukleosomen)

Renale Vaskulitis

ANCA
(Anti-PR3,
Anti-MPO)

ChLIA

■ Anti-PLA2R-ChLIA

ELISA

■ Anti-PLA2R-ELISA

■ Anti-GBM-ELISA

■ Anti-dsDNS-NcX-ELISA

■ Anti-PR3-hn-hr-ELISA

■ Anti-Nukleosomen-ELISA

■ Anti-MPO-ELISA

Blot

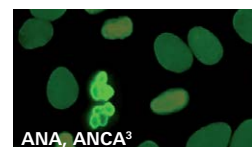
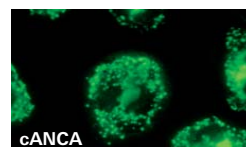
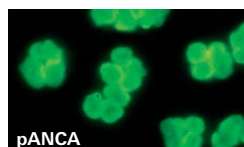
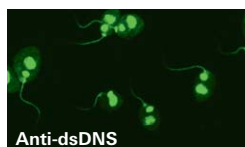
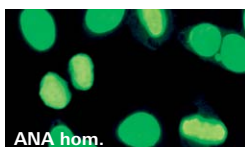
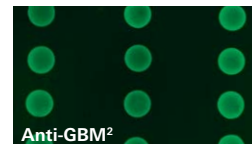
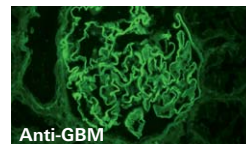
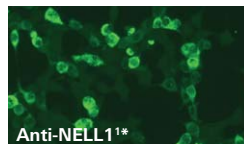
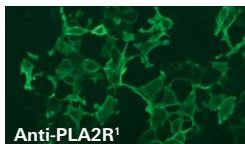


EUROLINE ANA-Profil



EUROLINE-Profil MPO/PR3/GBM

IIFT



¹ Transfizierte Zellen ² Antigen-Dots (EUROPLUS) ³ HEp-2-Zellen + Granulocyten

* Bald erhältlich: IIFT für den Nachweis von Autoantikörpern gegen NELL1 (nur für Forschungszwecke, nicht zur In-vitro-Diagnostik)

Weitere Informationen unter: www.PLA2R.de