



ANCA-associated vasculitides

Comprehensive portfolio for serological diagnostics

IIFT

Screening and differentiation tests for the determination of cANCA and pANCA in the form of granulocyte mosaics

ELISA

Monospecific and quantitative confirmatory tests for autoantibodies against PR3, MPO and GBM

ChLIA

Fully automated processing at high speed and with random access

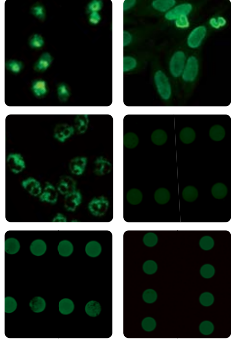
Blot

Multiplex tests for monospecific detection of antibodies against PR3, MPO and GBM using a single test strips



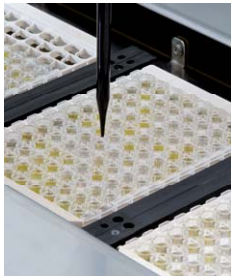
Product overview for ANCA determination

Indirect immunofluorescence (IIFT)



Order no.	Substrate
FA 1200-####	Ethanol-fixed granulocytes
FA 1201-####	Formalin-fixed granulocytes
FA 1201-####-2	Ethanol-fixed granulocytes, formalin-fixed granulocytes
FA 1201-####-13	Ethanol-fixed granulocytes, formalin-fixed granulocytes, HEp-2 cells + granulocytes
FA 1201-####-25	Ethanol-fixed granulocytes, formalin-fixed granulocytes, HEp-2 cells + granulocytes, highly purified antigen dots: PR3, MPO and GBM EUROPLUS
FA 1201-####-32	Ethanol-fixed granulocytes, formalin-fixed granulocytes, HEp-2 cells + granulocytes, highly purified antigen dots: PR3 and MPO EUROPLUS

ELISA



Order no.	Substrate
EA 1201-9601-2 G	Microplate wells coated with PR3
EA 1211-9601 G	Microplate wells coated with MPO
EA 1251-9601 G	Microplate wells coated with GBM
EA 1200-1208-1 G	Microplate wells with separate coatings: PR3, MPO, elastase, cathepsin G, BPI, lactoferrin

ChLIA*



Order no.	Substrate	Control set
LA 1201-10010 G	Magnetic particles coated with PR3	LR 1201-20210 G
IS-AI1702II		IS-AI1730
LA 1211-10010 G**	Magnetic particles coated with MPO	LR 1211-20210 G
IS-AI1701		IS-AI1730
LA 1251-10010 G	Magnetic particles coated with GBM	LR 1251-20210 G
IS-AI1703		IS-AI1730

* All ChLIAs are processed automatically using the IDS-i10 or the IDS-iSYS Multi-Discipline Automated System. The required product- or lot-specific information are provided on a mini CD or an RFID card, depending on the test kit.

** Soon available

Immunoblot



Order no.	Substrate
DL 1200-####-2 G	Test strips with separate coatings of PR3 and MPO
DL 1200-####-3 G	Test strips with separate coatings of PR3, MPO and GBM

Products manufactured by EUROIMMUN (order numbers beginning with FA, EA, LA/LR or DL) or IDS (order numbers beginning with IS). Regulatory status and precise intended use of the products must be verified for the user's individual jurisdiction. Please contact your country representative for product availability and information.

For more information and products, visit
www.euroimmun.com/vasculitis

